

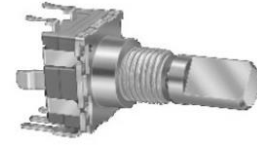
11mm Rotary Type, Metal Shaft Series

Application

- ✓ Audio, Home appliance, Automotive, etc.

Feature

- ✓ Low profile type with push switch function



■Specification

Total Rotational Angle	300 ± 5°
Maximum Operating Voltage	50V AC
Insulation Resistance	100MΩ Min. at 250V DC
Dielectric Strength	250V AC, 1 minute
Rotational Torque	40 ~ 250 gf.cm
Rotational Life	15,000 cycles
Switch Circuit	S.P.S.T.
Switch Stroke	0.5 mm
Switch Rating	12V DC 0.3A
Switch Operating Force	500±200 gf.cm
Switch Operating Life	20,000 cycles

■How to order

RD1110PF – 40BJ – 20F – B50K – 0C

[Model](#)

[Shaft](#)

Number of Click

Order code	Description
Blank	No click
0C	With center click

Taper and Resistance Value

Order Code	Taper	Resistance Value
A100K	Log/A	100KΩ
B1M	Linear/B	1MΩ

Taper: A, B


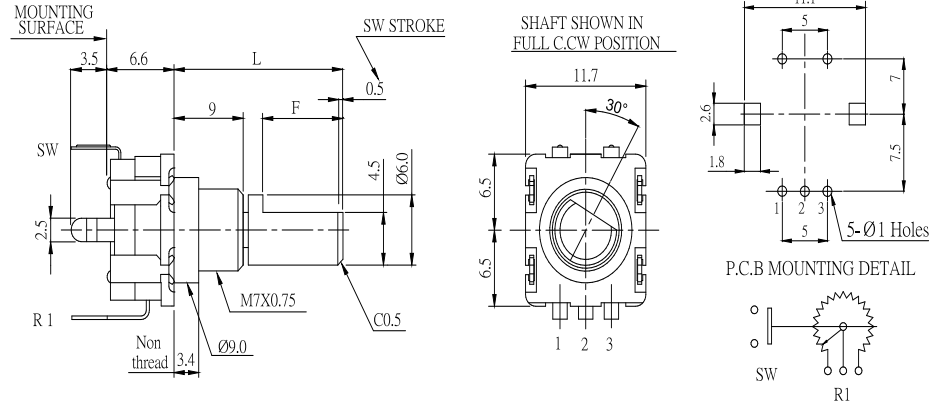
Resistance Value: 1KΩ to 500KΩ and 1MΩ

*Contact us for other requirements.

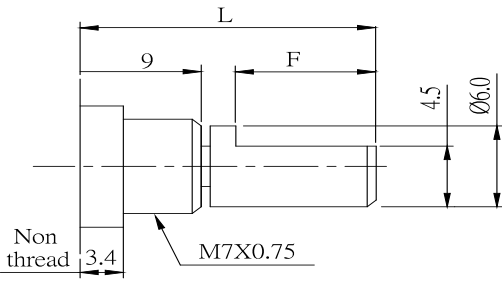
11mm Rotary Type, Metal Shaft Series

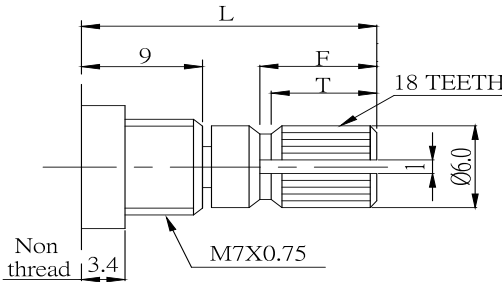
Model Description

Model	Number of Unit	Push Switch	Terminal Type	Bushing Type		Bushing Thread
RD1110PF-40BJ	Single unit	With switch	Vertical	Ø7mm	9mm	With thread

Order Code	Outline Drawing
RD1110PF-40BJ	 

Shaft and Bushing Dimensions

F Type					
	L	15	20	25	
	F	3.5	8	12	

K Type					
	L	15	20		
	F	4	7		
	T	3.5	6		

Design and specifications presented here are for the standard parts only. Please kindly contact us for your special requests and ask for the current technical specifications before purchase and/or use.

[Back to top](#)